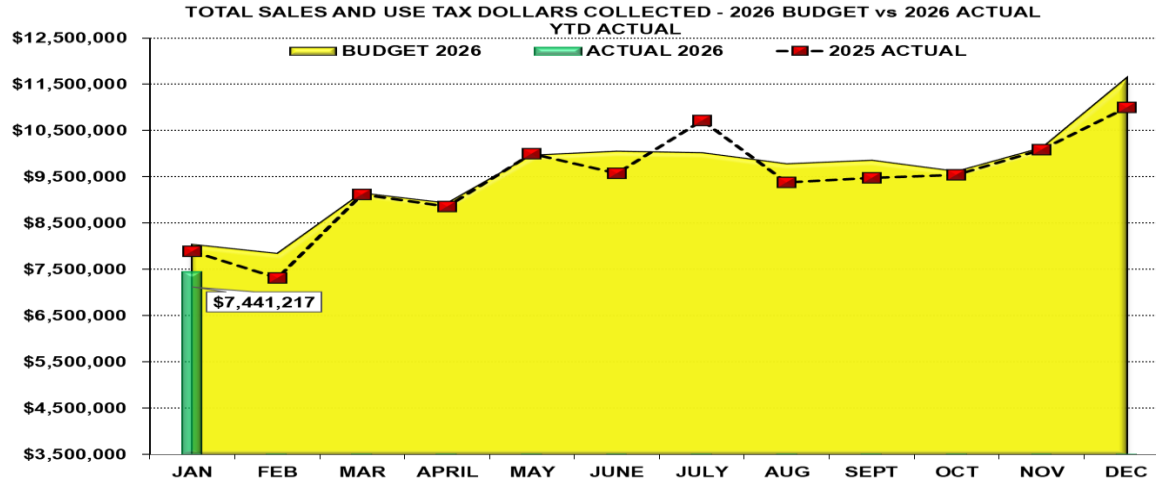
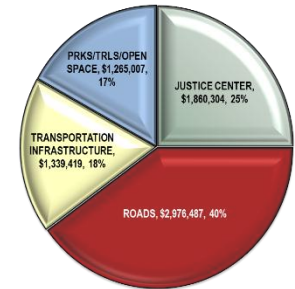


DOUGLAS COUNTY SALES AND USE TAX COLLECTION STATUS – JANUARY 2026



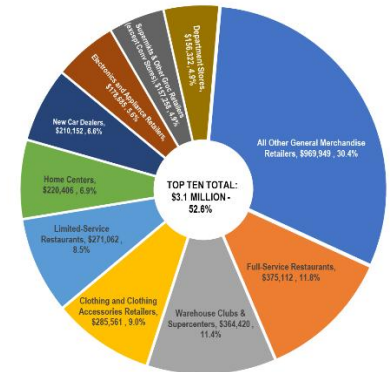
SALES AND USE TAX SUMMARY BY PURPOSE YEAR-TO-DATE
JANUARY 2026 - \$7,441,217



Tax Type	2026 Budget	2026 Actual	2025 Actual	'26 vs '25 YTD %	'26 vs '25 YTD \$ (+/-)
Sales Tax	\$ 6,350,225	\$ 6,063,267	\$ 6,110,753	-0.8% *	\$ (47,486)
Auto Use	1,155,513	\$ 889,695	1,309,636	-32.1%	\$ (419,941)
Building Use	540,334	\$ 488,255	470,026	3.9%	\$ 18,229
TOTAL	\$ 8,046,072	\$ 7,441,217	\$ 7,890,415	-5.7%	\$ (449,198)

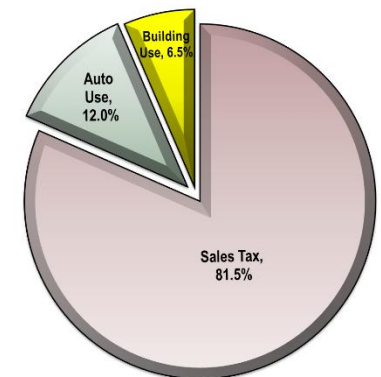
* Sales Tax decrease is due to audits for prior periods, totaling \$92,157. True current Year-to-Date Sales Tax is \$5,971,110. '26 Budget vs '26 Actual is a -6.0% decrease overall.

Top Ten North American Industry Code Cumulative % of Sales Tax Revenue Earned January 2026 - Total Sales Tax Collected \$6,063,267

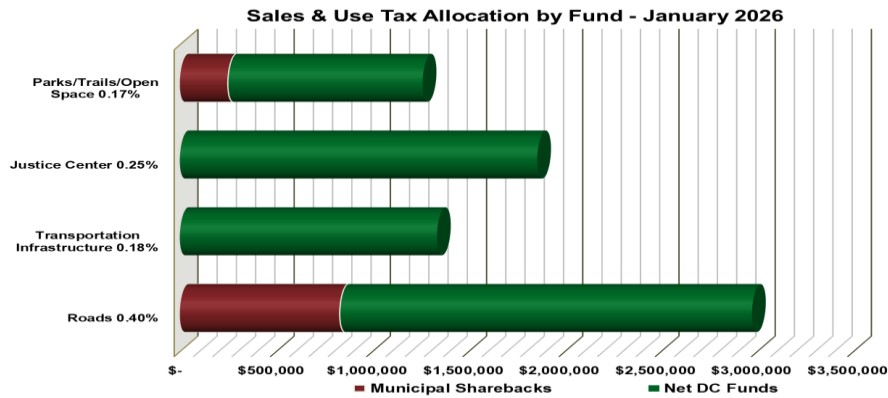


THROUGH JANUARY ONLINE SALES VS STORE SALES						
Year	Total Sales Tax Received	Online Sales	% of Overall Online Sales	Store Sales	% of Overall Store Sales	Online vs Store (+/-)
2022	\$ 5,737,514	\$ 3,157,348	55%	\$ 2,580,166	45%	\$ (577,181)
2023	\$ 5,474,550	\$ 2,676,976	49%	\$ 2,797,574	51%	\$ 120,597
2024	\$ 6,200,054	\$ 2,827,684	46%	\$ 3,372,370	54%	\$ 544,686
2025	\$ 6,110,753	\$ 2,933,057	48%	\$ 3,177,696	52%	\$ 244,639
2026	\$ 6,063,267	\$ 2,741,844	45%	\$ 3,321,423	55%	\$ 579,580

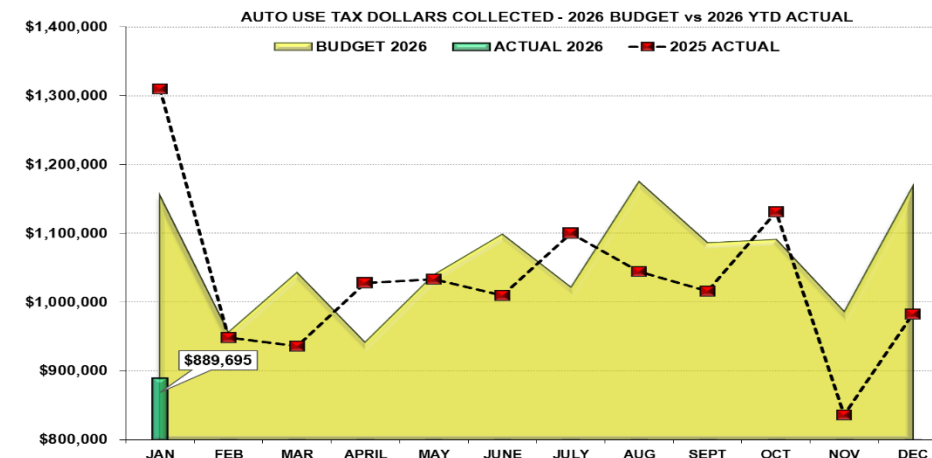
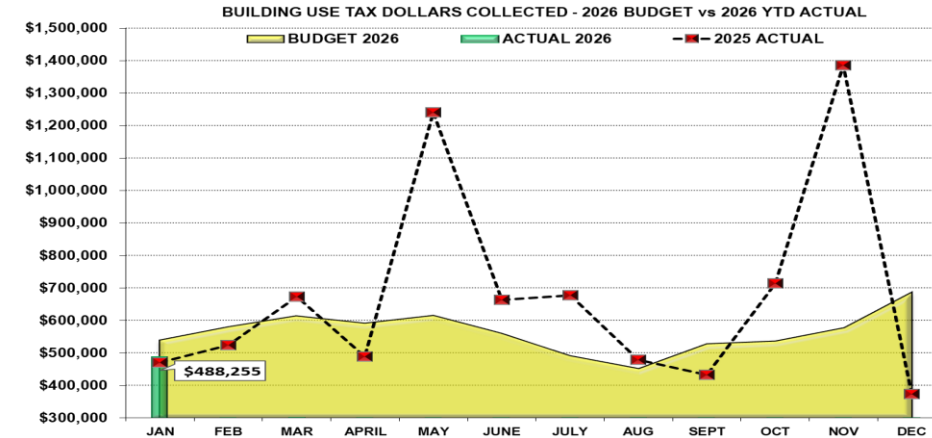
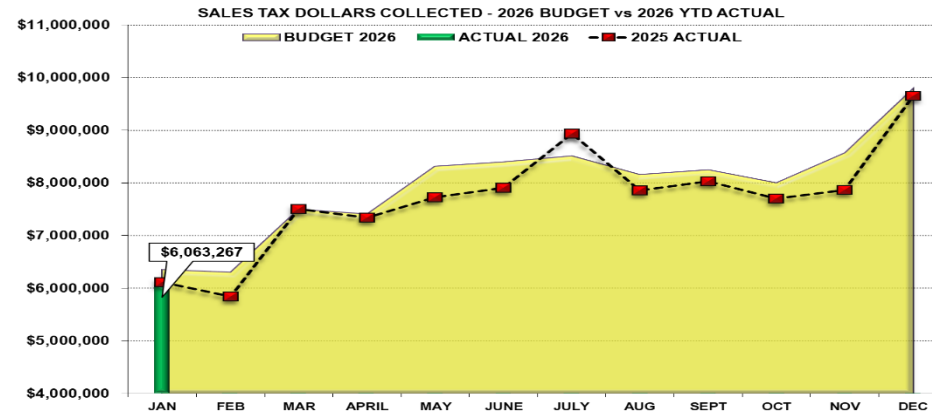
Revenue Sources as a % of Total Taxes Collected



DOUGLAS COUNTY SALES AND USE TAX COLLECTION STATUS – January 2026 (continued)



Through January 2026	Total S&U Tax Collected	Municipal Sharebacks	Net DC Funds	% of Municipal Sharebacks
Roads 0.40%	2,976,487	834,602	2,141,885	28.0%
Transportation Infrastructure 0.18%	1,339,419	-	1,339,419	0.0%
Justice Center 0.25%	1,860,304	-	1,860,304	0.0%
Parks/Trails/Open Space 0.17%	1,265,007	253,001	1,012,006	20.0%
YTD TOTAL	\$ 7,441,217	\$ 1,087,603	\$ 6,353,614	



Alignment to Board of County Commissioners
Core Priorities through January 2026 - \$7,441,217

